

# 1020 and 1060 Marsh Road Menlo Park, California



## Class A Menlo Park Professional Office Building



**HOWARD DALLMAR**  
650.688.8530

**KEVIN CUNNINGHAM**  
650.688.8521

**SARAH BOHANNON**  
650.358.5268



# Property Highlights



## 1020 Marsh Road

- ±34,352 SF Free Standing Two-Story Building (Divisible to ±17,176 SF)
- Available October 2016

## 1060 Marsh Road

- ±34,350 SF Free Standing Two-Story Building (Divisible to ±17,175 SF)
- Currently in Shell Condition

- 
- Major 2016 Renovation by DES Architects for Project Exteriors, Hardscape, and Landscape
  - Neighboring Tenants Include Orrick, Latham & Watkins, and Kilpatrick Townsend
  - Walking Distance to Amenities–Starbucks, Key Plaza, etc.
  - Shuttle to Downtown Menlo Park/Train Station
  - Parking 3.3/1000
  - Direct Lease from Bohannon Development Company

1020 and 1060 Marsh Road, Menlo Park, California

# Exterior Rendering



1020 and 1060 Marsh Road, Menlo Park, California



**HOWARD DALLMAR**  
650.688.8530

**KEVIN CUNNINGHAM**  
650.688.8521

**SARAH BOHANNON**  
650.358.5268



# Landscape Features



1020 and 1060 Marsh Road, Menlo Park, California

# Site Plan New Hardscape and Landscape



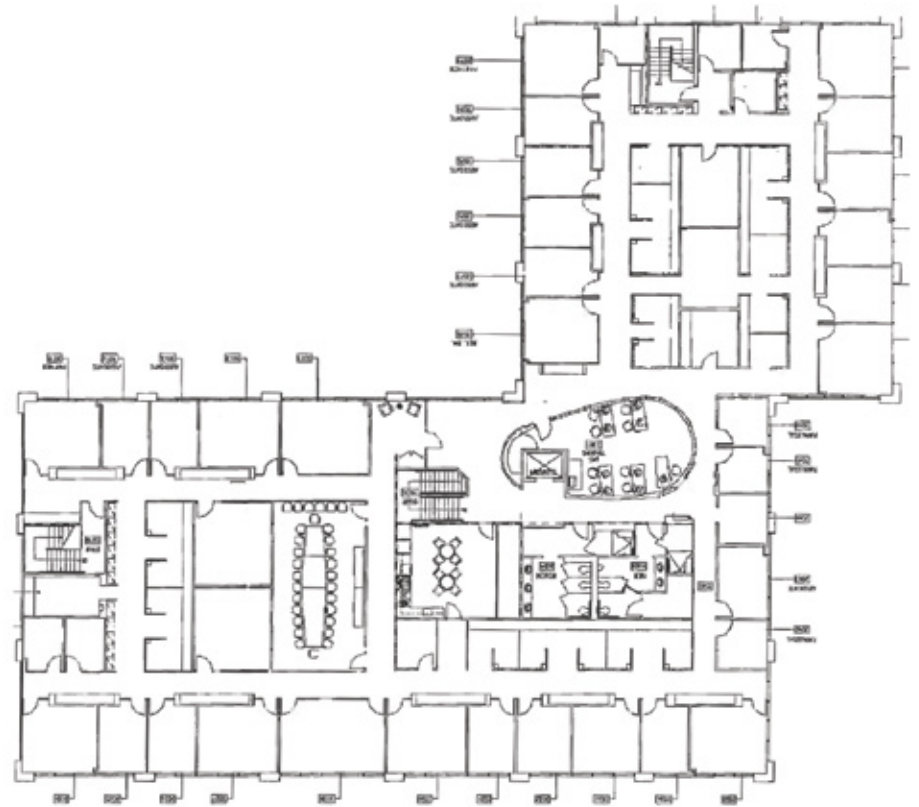
1020 and 1060 Marsh Road, Menlo Park, California

# 1020 Marsh Floorplans

First Floor: ±17,176 SF



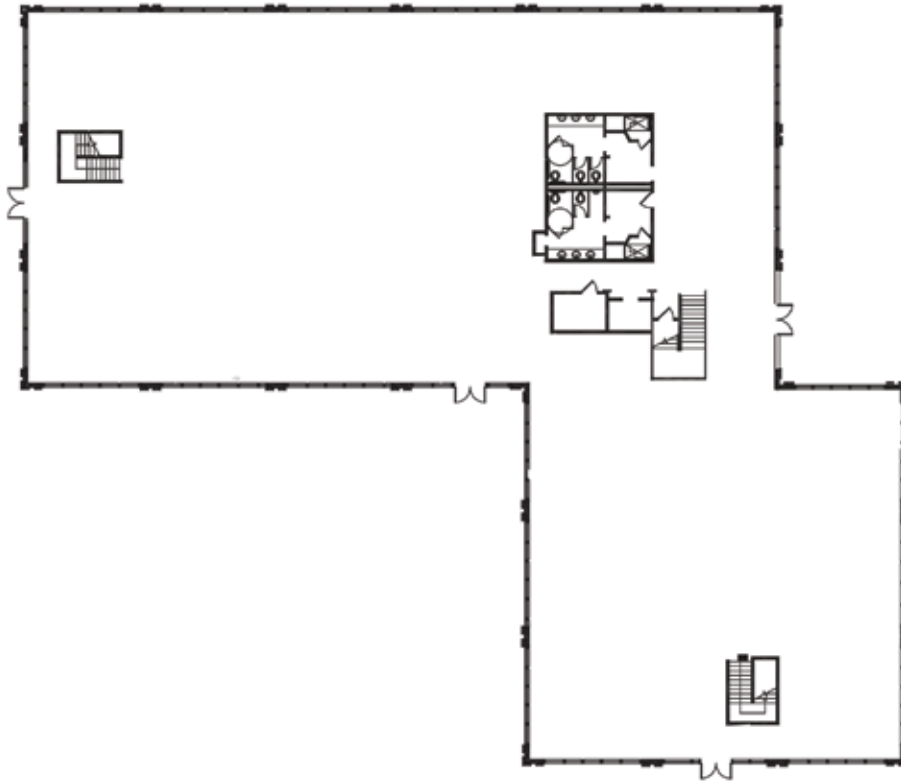
Second Floor: ±17,176 SF



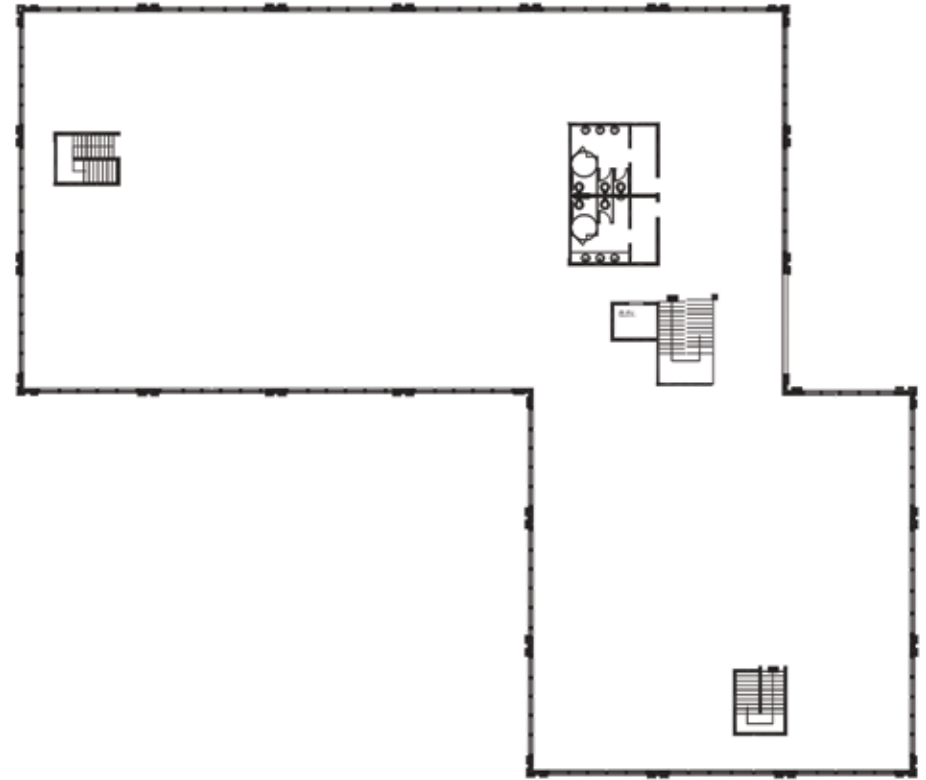
1020 and 1060 Marsh Road, Menlo Park, California

# 1060 Marsh Floorplans

First Floor: ±17,175 SF



Second Floor: ±17,175 SF



1020 and 1060 Marsh Road, Menlo Park, California

# 1060 Marsh Floorplans

West Entry



East Entry



1020 and 1060 Marsh Road, Menlo Park, California



# Sample Interior Lobby View



1020 and 1060 Marsh Road, Menlo Park, California



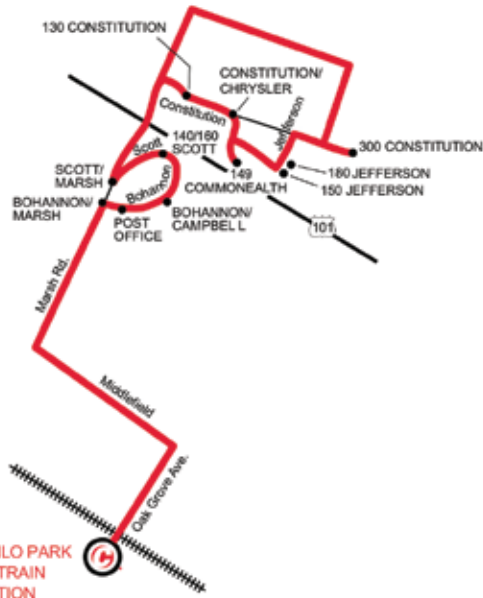
**HOWARD DALLMAR**  
650.688.8530

**KEVIN CUNNINGHAM**  
650.688.8521

**SARAH BOHANNON**  
650.358.5268



# Marsh Road Area CalTrain Shuttle Schedule



Passengers pay a fare on the train but ride free on the Caltrain Shuttle. Caltrain offers Monthly and 10-Ride passes. Caltrain also has a Ticket-by-Mail program.



## MORNING SCHEDULE \*

### FROM: SAN FRANCISCO

TRAIN	TRAIN NO.	210	220	230
Menlo Park		3:12 7:23 7:35	3:22 8:23 8:35	9:23
SHUTTLE				
Menlo Park Caltrain		7:47	8:47	9:25
Post Office		7:54	8:54	9:31
Bohannon Dr./Campbell		7:55	8:55	9:32
160 Scott		7:56	8:56	9:33
140 Scott		7:57	8:57	9:34
Scott/Marsh		7:58	8:58	9:35
130 Constitution		8:03	9:03	9:40
Constitution/Chrysler		8:03	9:03	9:40
149 Commonwealth		8:04	9:04	9:41
150 Jefferson		8:05	9:05	9:42
180 Jefferson		8:06	9:06	9:43
300 Constitution		8:07	9:07	9:44
Tyco Lobby		8:08	9:08	9:45

Shuttles wait 5 minutes past scheduled departure time for late trains.

### FROM: SAN JOSE

TRAIN	TRAIN NO.	207	217	227	233
Menlo Park		6:39 6:45	7:39 7:45	8:39 8:45	9:14
SHUTTLE					
Menlo Park Caltrain		6:47	7:47	8:47	9:25
Post Office		6:54	7:54	8:54	9:31
Bohannon Dr./Campbell		6:55	7:55	8:55	9:32
160 Scott		6:56	7:56	8:56	9:33
140 Scott		6:57	7:57	8:57	9:34
Scott/Marsh		6:58	7:58	8:58	9:35
130 Constitution		7:03	8:03	9:03	9:40
Constitution/Chrysler		7:03	8:03	9:03	9:40
149 Commonwealth		7:04	8:04	9:04	9:41
150 Jefferson		7:05	8:05	9:05	9:42
180 Jefferson		7:06	8:06	9:06	9:43
300 Constitution		7:07	8:07	9:07	9:44
Tyco Lobby		7:08	8:08	9:08	9:45

## AFTERNOON SCHEDULE \*

### TO: SAN FRANCISCO

SHUTTLE	TRAIN NO.	2:24	3:29	4:14	4:49	5:49
130 Constitution		2:24	3:29	4:14	4:49	5:49
Constitution/Chrysler		2:25	3:30	4:15	4:50	5:50
149 Commonwealth		2:26	3:31	4:16	4:51	5:51
150 Jefferson		2:27	3:32	4:17	4:52	5:52
180 Jefferson		2:28	3:33	4:18	4:53	5:53
300 Constitution		2:31	—	—	—	—
Tyco/Hope		—	3:34	—	—	—
Tyco Lobby		—	3:39	4:21	4:58	5:58
Scott/Marsh		2:39	3:40	4:22	4:59	5:59
140 Scott		2:40	3:41	4:23	5:00	6:00
160 Scott		2:41	3:41	4:23	5:01	6:01
Bohannon Dr./Campbell		2:42	3:42	4:24	5:01	6:01
Post Office		2:43	3:43	4:25	5:02	6:02
Menlo Park Caltrain		2:52	3:52	4:37	5:12	6:12

TRAIN	TRAIN NO.	257	261	365	267	277
Menlo Park		3:14	4:19	4:46	5:19	6:19

### TO: SAN JOSE/GILROY

SHUTTLE	TRAIN NO.	2:24	3:29	4:49	5:49
130 Constitution		2:24	3:29	4:49	5:49
Constitution/Chrysler		2:25	3:29	4:49	5:49
149 Commonwealth		2:26	3:30	4:50	5:50
150 Jefferson		2:27	3:31	4:51	5:51
180 Jefferson		2:27	3:32	4:52	5:52
300 Constitution		2:28	3:33	4:53	5:53
Tyco/Hope		2:31	—	—	—
Tyco Lobby		—	3:34	—	—
Scott/Marsh		2:39	3:39	4:58	5:58
140 Scott		2:40	3:40	4:59	5:59
160 Scott		2:41	3:41	5:00	6:00
Bohannon Dr./Campbell		2:42	3:42	5:01	6:01
Post Office		2:43	3:43	5:02	6:02
Menlo Park Caltrain		2:52	3:52	5:12	6:12

TRAIN	TRAIN NO.	154	158	266	276
Menlo Park		3:00	4:00	5:28	6:28

1020 and 1060 Marsh Road, Menlo Park, California